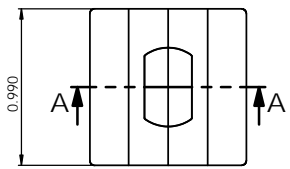
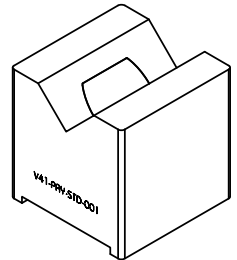
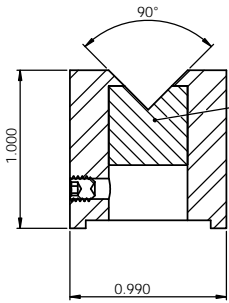
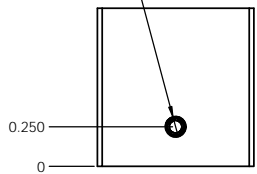


8	7	6	5	4	3	2	1
No. COMPONENTS IN ASSLY	OP1	OP2	OP3	OP4	OP5	OP6	
1							



Ø 0.130 ∇ 0.500
M4x0.7 - 6H ∇ 0.500



SECTION A-A

PrymeFix
fixturing solutions

155 PRAIRIE LAKE RD, SUITE A
EAST DUNDEE, IL 60118
847.428.7122

FILE NAME
V41-PRY-STD-001
DIRECTORY
P:\Manufacturing\PrymeFix Product Line\V11 V-blocks & Vices\V41-PRY-STD-001 V-BLOCK\

PROPRIETARY AND CONFIDENTIAL

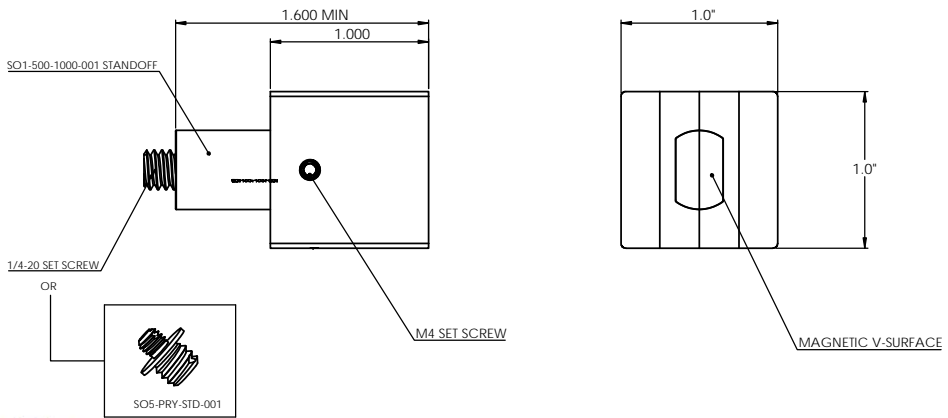
THE INFORMATION CONTAINED IN THIS DRAWING IS THE SOLE PROPERTY OF PRYMEFIX. ANY REPRODUCTION IN PART OR AS A WHOLE WITHOUT THE WRITTEN PERMISSION OF PRYMEFIX IS PROHIBITED.

1		UNLESS OTHERWISE SPECIFIED	DRAWN BY: RD	DATE: 10/10/2013
2	ADDED M4 MOUNTING HOLE, DO NOT RED	FRACTIONAL: ■ 003 ANGULAR: ■ 1.0 TWO PLACE DECIMAL: ■ 010 THREE PLACE DECIMAL: ■ 003 FOUR PLACE DECIMAL: ■ 0005 (REAM)	TITLE: V41-PRY-STD-001 [1" Sq MAGNETIC V-BLOCK]	
3		HEAT TREAT: N/A	No Pcs to Complete Order:	
4		MATERIAL: SS	SIZE: B	
5		FINISH: HARD CHROME	DWG. NO: V41-PRY-STD-001 PRINTS	
6			REV: 2	
7			SCALE: 2:1	
REVISION HISTORY			INCH UNITS	WEIGHT: 0.20
				SHEET 4 OF 5

8	7	6	5	4	3	2	1
No. COMPONENTS IN ASSLY	OP1	OP2	OP3	OP4	OP5	OP6	

1

DATE ORDERED	ORDERED FROM	ITEM NO.	PART NUMBER	DESCRIPTION	-000/QTY.
		1	V41-PRY-STD-001	1" Sq MAGNETIC V-BLOCK	1
		2	V41 MAGNET-500X500_DB8	DB8 MAGNET 1/2" OD x 1/2" L (MODIFIED)	1
		3	92015A110	SET SCREW CUP POINT M4x4mm 92015A110	1
		4	SO1-XXX-XXX-001	PrymeFix Standoff: 1/2" OD x 1.0" L	1



PrymeFix
fixturing solutions

155 PRAIRIE LAKE RD, SUITE A
EAST DUNDEE, IL 60118
847.428.7122

FILE NAME	V41-PRY-STD-001
DIRECTORY	P:\Manufacturing\PrymeFix Product Line\V11 V-blocks & Vices\V41-PRY-STD-001 V-BLOCK\

PROPRIETARY AND CONFIDENTIAL

THE INFORMATION CONTAINED IN THIS DRAWING IS THE SOLE PROPERTY OF PRYMEFIX. ANY REPRODUCTION IN PART OR AS A WHOLE WITHOUT THE WRITTEN PERMISSION OF PRYMEFIX IS PROHIBITED.

1		UNLESS OTHERWISE SPECIFIED	DRAWN BY: RD	DATE: 10/10/2013
2	ADDED M4 MOUNTING HOLE, Ø0.1021 RD		TITLE: V41-PRY-STD-000 [1" Sq V-BLOCK w/STANDOFF]	
3		FRACTIONAL: # 003 ANGULAR: # 1 D TWO PLACE DECIMAL: # 010 THREE PLACE DECIMAL: # 003 FOUR PLACE DECIMAL: # 0005 (REAM)		
4		HEAT TREAT: N/A	No Pcs to Complete Order:	
5		MATERIAL: SS		
6		FINISH: HARD CHROME		
7				
REVISION HISTORY			INCH UNITS	SCALE: 2:1
			WEIGHT: 0.22	SHEET 3 OF 5