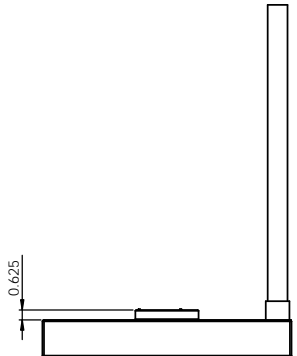
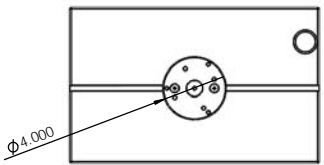


No. COMPONENTS
IN ASSLY
1

OP1 OP2 OP3 OP4 OP5 OP6

DATE ORDERED	ORDERED FROM	ITEM NO.	PART NUMBER	DESCRIPTION	K13-MTI-SUR-001/001 PUCK ONLY/QT Y.
		1	178-039-000	178-039 MTI GRANITE STAND	1
		2	K13-MTI-SUR-000	-001 MOUNTING PUCK ONLY	1



PrymeFix
fixturing solutions

155 PRAIRIE LAKE RD, SUITE A
EAST DUNDEE, IL 60118
847.428.7122

3D PRINTER PROPERTIES			
Material 1	<input type="checkbox"/> Support	Material 2	<input type="checkbox"/> Support
Cone 1:		Cone 2:	

PROPRIETARY AND CONFIDENTIAL

THE INFORMATION CONTAINED IN THIS DRAWING IS THE SOLE PROPERTY OF PRYMEFIX. ANY REPRODUCTION IN PART OR AS A WHOLE WITHOUT THE WRITTEN PERMISSION OF PRYMEFIX IS PROHIBITED.

1
2
3
4
5
6
7

UNLESS OTHERWISE SPECIFIED	
FRAC TIONAL	003
ANGULAR	1/10
TWO PLACE DECIMAL	010
THREE PLACE DECIMAL	003
FOUR PLACE DECIMAL	0005 (REAM)
HEAT TREAT	N/A
MATERIAL	Material <not specified>
FINISH	N/A

DESIGN BY: **JO** DATE: **12/8/2021**

TITLE:
**K13-MTI-SUR-001
MOUNTING PUCK ONLY**

SIZE	DWG. NO.	REV
B	B11-MTI-SUR-178309 TECHNICAL DRAWINGS	0

FILE NAME
B11-MTI-SUR-178309
DIRECTORY
P:\Manufacturing\PrymeFix Product Line\B11 Fixture Solutions\B11-MTI-SUR-178309\

REVISION HISTORY	MACHINING PROPERTIES	INCH UNITS	SCALE: 1:10	WEIGHT:	SHEET 1 OF 10
------------------	----------------------	------------	-------------	---------	---------------