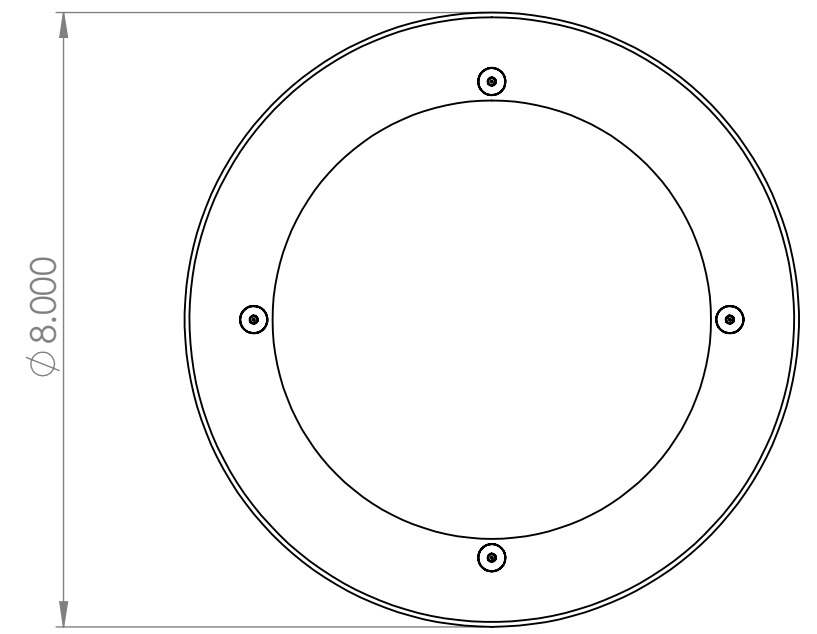
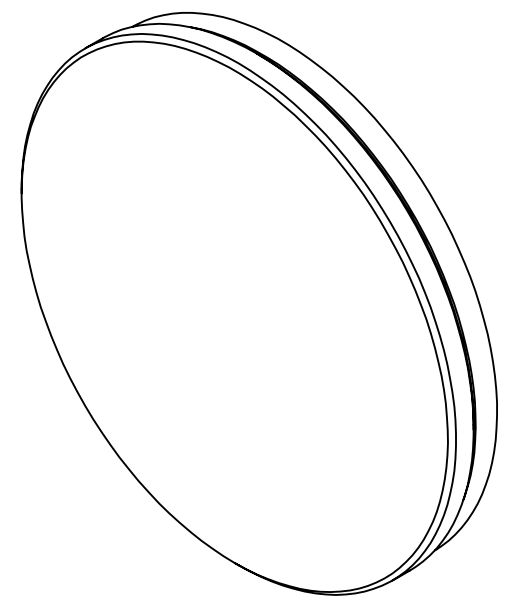
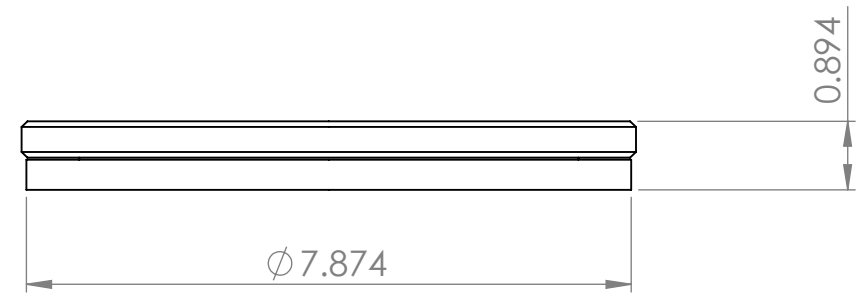


8	7	6	5	4	3	2	1
No. COMPONENTS IN ASSLY <b>1</b>	OP1	OP2	OP3	OP4	OP5	OP6	



155 PRAIRIE LAKE RD, SUITE A  
EAST DUNDEE, IL 60118  
847.428.7122

FILE NAME  
3D3-GOM-HWK-001  
DIRECTORY  
P:\Manufacturing\PrymeFix Product Line\3DX Scanning Items\3D3-GOM-HWK-001 Rotary Table\

3D PRINTER PROPERTIES			
Material 1: <b>N/A</b>	<input type="checkbox"/> Support	Material 2: <b>N/A</b>	<input type="checkbox"/> Support
Core 1:		Core 2:	

**PROPRIETARY AND CONFIDENTIAL**

THE INFORMATION CONTAINED IN THIS DRAWING IS THE SOLE PROPERTY OF PRYMETECH. ANY REPRODUCTION IN PART OR AS A WHOLE WITHOUT THE WRITTEN PERMISSION OF PRYMETECH IS PROHIBITED.

1	
2	
3	
4	
5	
6	
7	

UNLESS OTHERWISE SPECIFIED	
FRACTIONAL $\pm .003$ ANGULAR: $\pm 1.0$ TWO PLACE DECIMAL $\pm .010$ THREE PLACE DECIMAL $\pm .003$ FOUR PLACE DECIMAL $\pm .0005$ (REAM)	
HEAT TREAT <b>N/A</b>	No Pcs to Complete Order:
MATERIAL <b>Delrin &amp; Aluminum</b>	
FINISH <b>N/A</b>	

DRAWN BY: **JO**      DATE: **12/15/2021**

TITLE:  
**MANUAL ROTARY ASSEMBLY**

SIZE <b>B</b>	DWG. NO. 3D3-GOM-HWK-001_TECHNICAL_DWG	REV <b>0</b>
---------------	---	--------------

REVISION HISTORY	MACHINING PROPERTIES	INCH UNITS	SCALE: 1:2	WEIGHT:	SHEET 1 OF 1
------------------	----------------------	------------	------------	---------	--------------