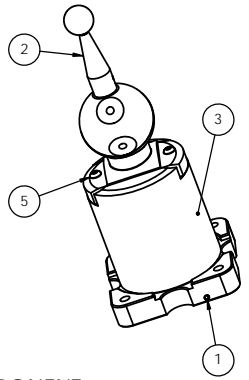
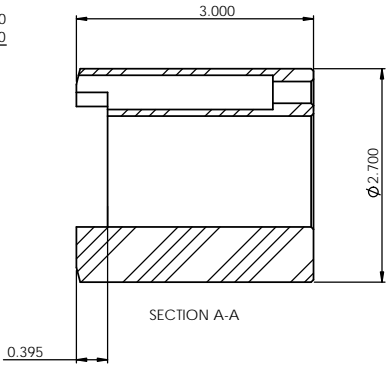
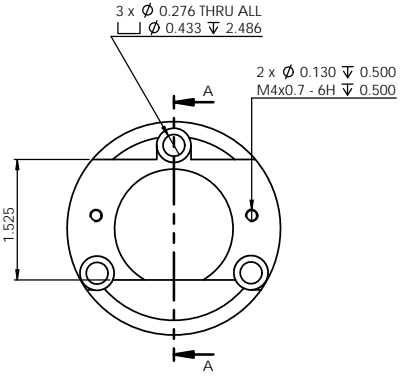


8	7	6	5	4	3	2	1
No. COMPONENTS IN ASSLY	OP1	OP2	OP3	OP4	OP5	OP6	
1							

DATE ORDERED	ORDERED FROM	ITEM NO.	PART NUMBER	DESCRIPTION	QTY.
		1	A56-PRY-STD-001 ZERO DEG	A56 TOUCH PROBE CARTRIDGE	1
		2	21-D127-000	ZEISS CMM CALIBRATION SPHERE ASSLY	1
		3	A56-PRY-STD-008	CAL SPHERE RISER, ZEISS CMMs	1
		4	91292A136	SS SOCKET HEAD SCREW M4x18	3
		5	92095A194	BUTTON HEAD SCREW M4x16	2



3D PRINTED COMPONENT
 REFERENCE DIMS ONLY

PrymeFix
 fixturing solutions

155 PRAIRIE LAKE RD, SUITE A
 EAST DUNDEE, IL 60118
 847.428.7122

FILE NAME
 A56-PRY-STD-008
 DIRECTORY
 P:\Manufacturing\PrymeFix Product Line\A60 Calibration Inserts\A56-PRY-STD-001 Zero Deg Base\

PROPRIETARY AND CONFIDENTIAL

THE INFORMATION CONTAINED IN THIS DRAWING IS THE SOLE PROPERTY OF PRYMEFIX. ANY REPRODUCTION IN PART OR AS A WHOLE WITHOUT THE WRITTEN PERMISSION OF PRYMEFIX IS PROHIBITED.

1		UNLESS OTHERWISE SPECIFIED FRACTIONAL: \bullet 003 ANGULAR: \bullet 10 TWO PLACE DECIMAL: \bullet 010 THREE PLACE DECIMAL: \bullet 003 FOUR PLACE DECIMAL: \bullet 0005 (REAM)	DRAWN BY: RD	DATE: 1/27/2021		
2			TITLE: CAL SPHERE RISER, ZEISS CMMs			
3						
4			HEAT TREAT: N/A	No Pcs to Complete Order:		
5			MATERIAL: PLA-Tough			
6			FINISH: BLACK			
7				SIZE: B	DWG. NO: A56-PRY-STD-001	REV: 0
REVISION HISTORY			INCH UNITS	SCALE: 1:1	WEIGHT: 0.38	SHEET 5 OF 8