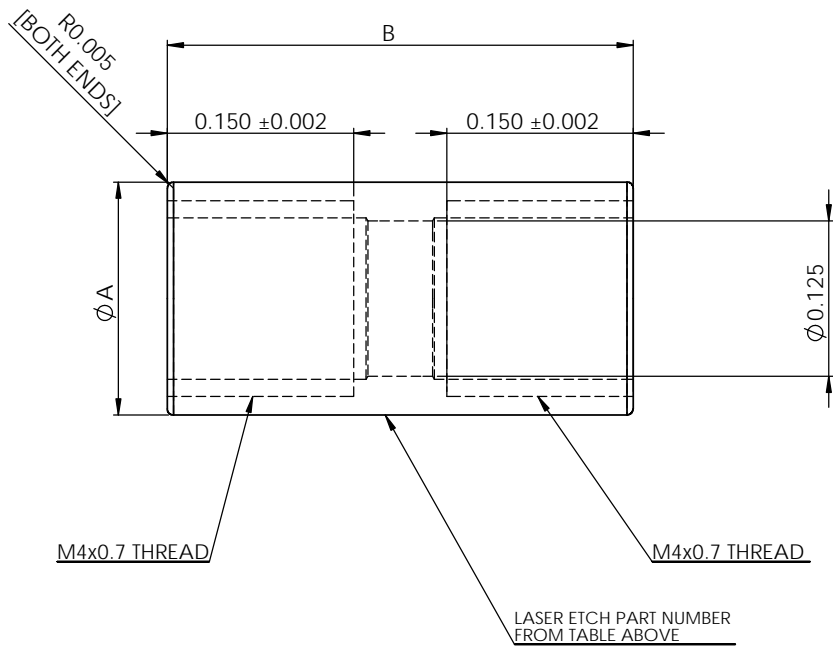


8	7	6	5	4	3	2	1
No. COMPONENTS IN ASSLY	OP1	OP2	OP3	OP4	OP5	OP6	

1

PART No	A	B	QTY IN KIT
SO2-188-375-001	.1875	.3750	6
SO2-188-500-001	.1875	.5000	6
SO2-250-375-001	.2500	.3750	6
SO2-250-500-001	.2500	.5000	6
SO2-375-375-001	.3750	.3750	6
SO2-375-500-001	.3750	.5000	6



**PrymeFix**  
fixturing solutions

155 PRAIRIE LAKE RD, SUITE A  
EAST DUNDEE, IL 60118  
847.428.7122

FILE NAME  
SO2-188-375-001  
DIRECTORY  
P:\Manufacturing\PrymeFix Product Line\SO Standoffs & Kits\SO2 M4 Kits\

PROPRIETARY AND CONFIDENTIAL  
THE INFORMATION CONTAINED IN THIS DRAWING IS THE SOLE PROPERTY OF PRYMEFIX. ANY REPRODUCTION IN PART OR AS A WHOLE WITHOUT THE WRITTEN PERMISSION OF PRYMEFIX IS PROHIBITED.

1		UNLESS OTHERWISE SPECIFIED FRACTIONAL $\pm .003$ ANGULAR: $\pm 1.0$ TWO PLACE DECIMAL $\pm .010$ THREE PLACE DECIMAL $\pm .003$ FOUR PLACE DECIMAL $\pm .0005$ (REAM)	DRAWN BY: <b>RD</b>	DATE 10/9/2013		
2			TITLE: M4 STANDOFF 3/16" OD x 3/8" L			
3						
4			HEAT TREAT <b>N/A</b>	No Pcs to Complete Order:		
5			MATERIAL <b>6061 Alloy</b>			
6			FINISH <b>BLACK ANODIZED</b>	SIZE <b>B</b>	DWG. NO. SO2-PRY-STD-001 PRINTS	REV <b>0</b>
7				SCALE: 10:1	WEIGHT:	SHEET 11 OF 13
REVISION HISTORY		INCH UNITS				