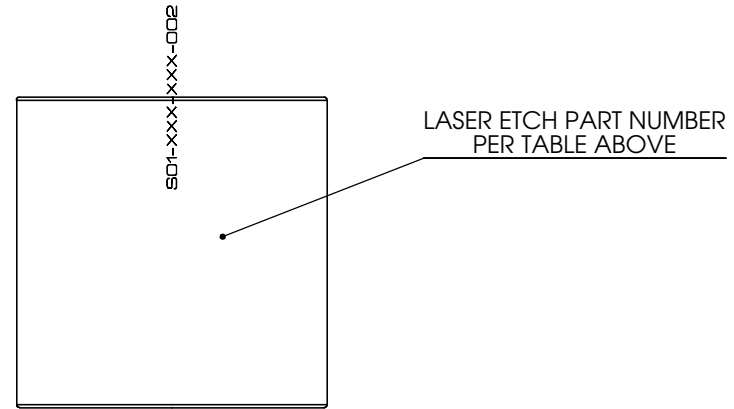
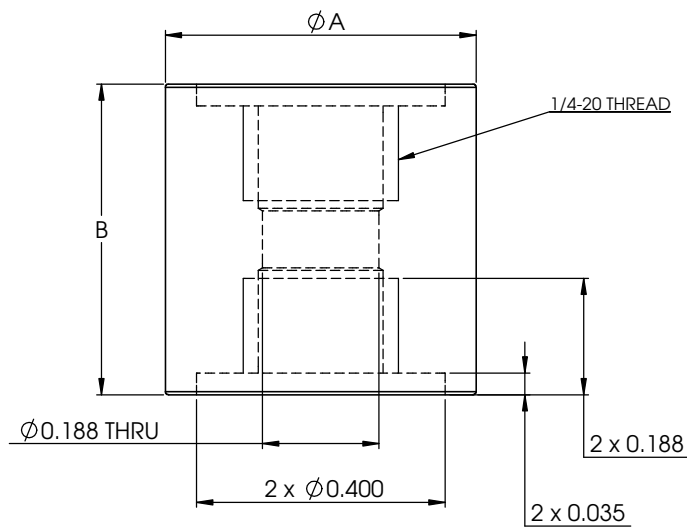


8	7	6	5	4	3	2	1
No. COMPONENTS IN ASSLY	OP1	OP2	OP3	OP4	OP5	OP6	

1

PART NUMBER	A	B	MATERIAL
S01-500-500-002	0.500"	0.500"	Acrylic
S01-500-1000-002	0.500"	1.000"	Acrylic
S01-750-500-002	0.750"	0.500"	Acrylic
S01-750-1000-002	0.750"	1.000"	Acrylic



PrymeFix
fixturing solutions

155 PRAIRIE LAKE RD, SUITE A
EAST DUNDEE, IL 60118
847.428.7122

FILE NAME
SO1-XXX-XXX-002
DIRECTORY
P:\Manufacturing\PrymeFix Product Line\SO Standoffs & Kits\SO1 14-20 Kits\

PROPRIETARY AND CONFIDENTIAL

THE INFORMATION CONTAINED IN THIS DRAWING IS THE SOLE PROPERTY OF PRYMEFIX. ANY REPRODUCTION IN PART OR AS A WHOLE WITHOUT THE WRITTEN PERMISSION OF PRYMEFIX IS PROHIBITED.

1	ADDED LASER ETCH DESIGNATION	UNLESS OTHERWISE SPECIFIED FRACTIONAL $\pm .003$ ANGULAR: ± 1.0 TWO PLACE DECIMAL $\pm .010$ THREE PLACE DECIMAL $\pm .003$ FOUR PLACE DECIMAL $\pm .0005$ (REAM)	DRAWN BY: AK	DATE 10/9/2013	
2			TITLE: SO1-XXX-XXX-002		
3					
4					
5	HEAT TREAT N/A				No Pcs to Complete Order:
6	MATERIAL Acrylic (Medium-high impact)				
7	FINISH				SIZE B
REVISION HISTORY		INCH UNITS	SCALE: 5:1	WEIGHT:	SHEET 2 OF 8