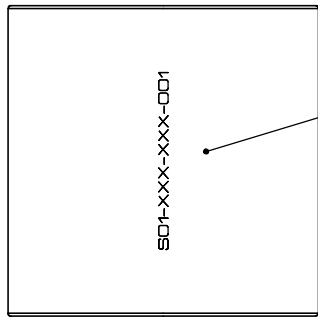
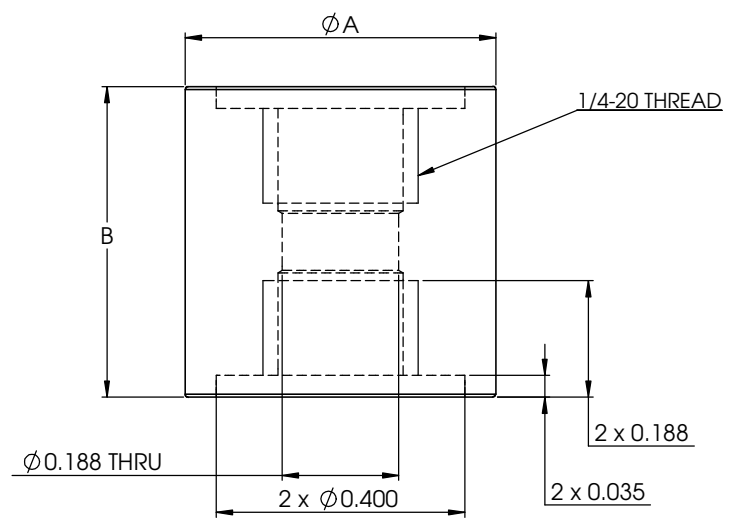


8	7	6	5	4	3	2	1
No. COMPONENTS IN ASSLY	OP1	OP2	OP3	OP4	OP5	OP6	

PART NUMBER	A	B	MATERIAL
S01-500-500-001	0.500"	0.500"	6061 Al
S01-500-1000-001	0.500"	1.000"	6061 Al
S01-750-500-001	0.750"	0.500"	6061 Al
S01-750-1000-001	0.750"	1.000"	6061 Al
S01-1000-1000-001	1.000"	1.000"	6061 Al
S01-1000-2000-001	1.000"	2.000"	6061 Al



PrymeFix
fixturing solutions

155 PRAIRIE LAKE RD, SUITE A
EAST DUNDEE, IL 60118
847.428.7122

FILE NAME	SO1-XXX-XXX-001
DIRECTORY	P:\Manufacturing\PrymeFix Product Line\SO Standoffs & Kits\SO1 14-20 Kits\

PROPRIETARY AND CONFIDENTIAL

THE INFORMATION CONTAINED IN THIS DRAWING IS THE SOLE PROPERTY OF PRYMEFIX. ANY REPRODUCTION IN PART OR AS A WHOLE WITHOUT THE WRITTEN PERMISSION OF PRYMEFIX IS PROHIBITED.

1	ADDED LASER ETCH DESIGNATION	UNLESS OTHERWISE SPECIFIED FRACTIONAL: $\pm .003$ ANGULAR: ± 1.0 TWO PLACE DECIMAL: $\pm .010$ THREE PLACE DECIMAL: $\pm .003$ FOUR PLACE DECIMAL: $\pm .0005$ (REAM)	DRAWN BY: AK	DATE: 10/9/2013		
2			TITLE: SO1-XXX-XXX-001			
3						
4			HEAT TREAT: N/A	No Pcs to Complete Order:		
5			MATERIAL: 6061 Alloy			
6			FINISH: BLACK ANODIZED	SIZE: B	DWG. NO.: SX1-PRY-STD-XXX PRINTS	REV: 1
7				SCALE: 5:1	WEIGHT:	SHEET 1 OF 8
REVISION HISTORY		INCH UNITS				