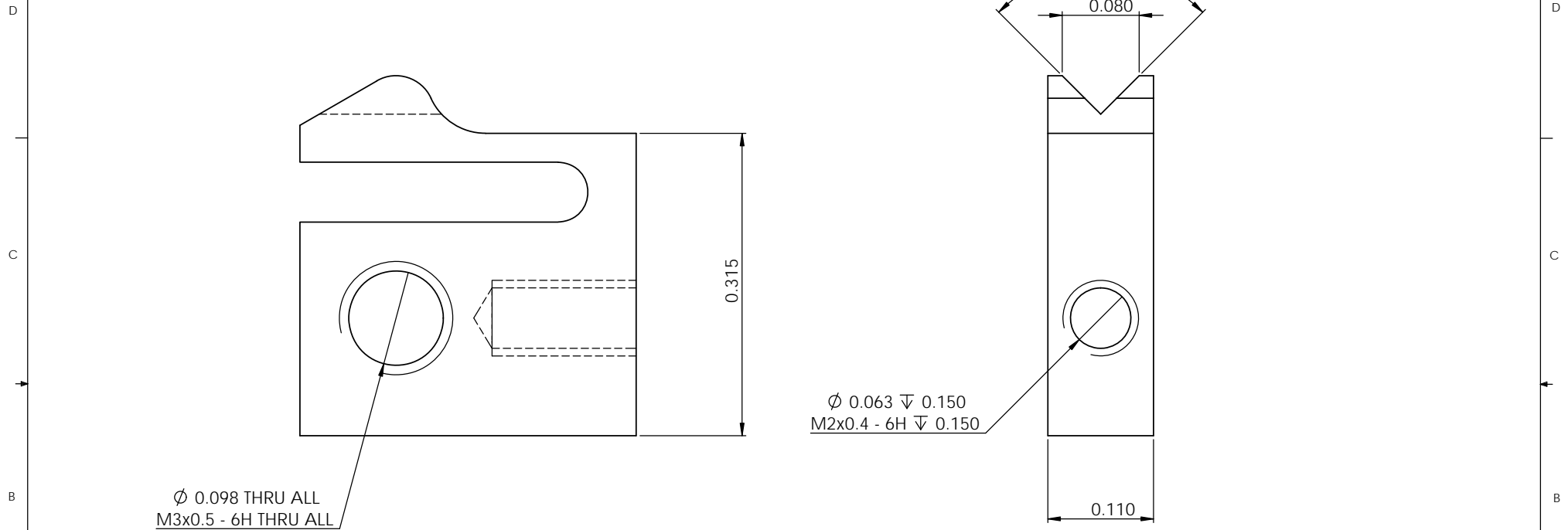


8	7	6	5	4	3	2	1
No. COMPONENTS IN ASSLY	OP1	OP2	OP3	OP4	OP5	OP6	

1



TECHNICAL DRAWING



155 PRAIRIE LAKE RD, SUITE A
EAST DUNDEE, IL 60118
847.428.7122

3D PRINTER PROPERTIES	
Material 1: <input type="checkbox"/> Support	Material 2: <input type="checkbox"/> Support
Core 1:	Core 2:

PROPRIETARY AND CONFIDENTIAL

THE INFORMATION CONTAINED IN THIS DRAWING IS THE SOLE PROPERTY OF PRYMETECH. ANY REPRODUCTION IN PART OR AS A WHOLE WITHOUT THE WRITTEN PERMISSION OF PRYMETECH IS PROHIBITED.

1	ADDED 45° GROOVE TO PUSHER EDGE
2	ADDED M2 THREAD 16-0914 RD
3	DECREASED THICKNESS TO .11", RD 17-0726
4	
5	
6	
7	

UNLESS OTHERWISE SPECIFIED	
FRACTIONAL $\pm .003$	ANGULAR: ± 1.0
TWO PLACE DECIMAL $\pm .010$	THREE PLACE DECIMAL $\pm .003$
FOUR PLACE DECIMAL $\pm .0005$ (REAM)	
HEAT TREAT: N/A	No Pcs to Complete Order:
MATERIAL: DELRIN or ALUMINUM	
FINISH: WHITE	

DRAWN BY: RD	DATE: 1/27/2014
TITLE: CUSTOM PLUNGER INSERT	
SIZE: B	DWG. NO.: 14-1204 CUSTOM PLUNGER PRINTS
	REV: 3

FILE NAME 14-1204 CUSTOM PLUNGER
DIRECTORY P:\Manufacturing\Master CAD Libraries\Spring Plungers\

REVISION HISTORY	MACHINING PROPERTIES	INCH UNITS	SCALE: 10:1	WEIGHT:	SHEET 1 OF 1
------------------	----------------------	------------	-------------	---------	--------------

8	7	6	5	4	3	2	1
---	---	---	---	---	---	---	---