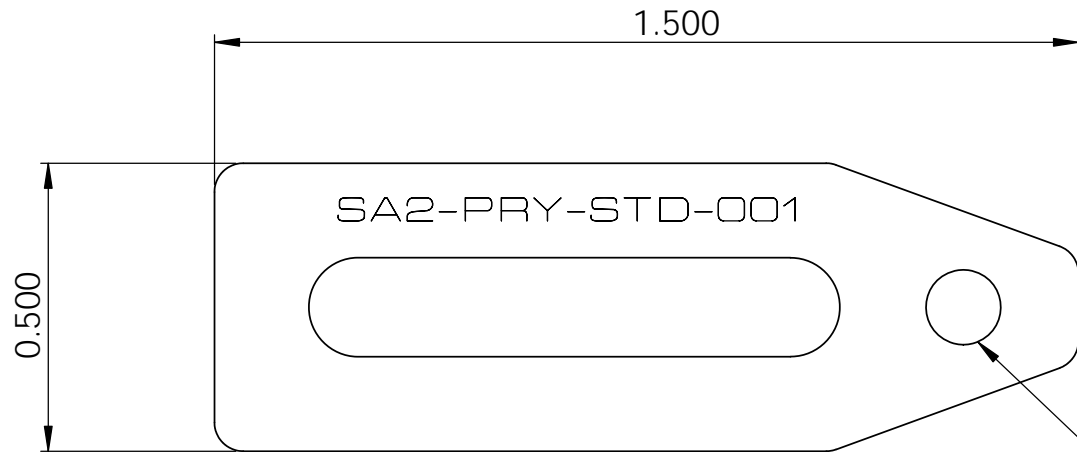
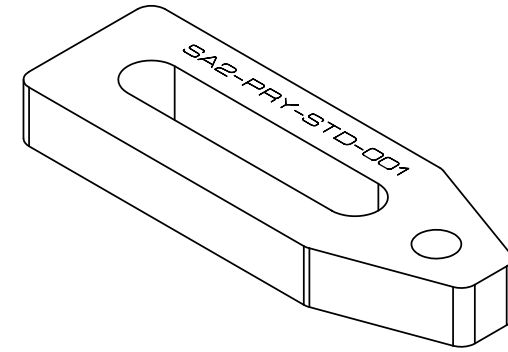


No. COMPONENTS IN ASSLY	OP1	OP2	OP3	OP4	OP5	OP6	1
1							



M4x0.7" THREAD



PrymeFix
fixturing solutions

155 PRAIRIE LAKE RD, SUITE A
EAST DUNDEE, IL 60118
847.428.7122

FILE NAME
SA2-PRY-STD-001

DIRECTORY
P:\Manufacturing\PrymeFix Product Line\SA Slide Arms\SA2 M4 Slide Arms\

PROPRIETARY AND CONFIDENTIAL

THE INFORMATION CONTAINED IN THIS DRAWING IS THE SOLE PROPERTY OF PRYMEFIX. ANY REPRODUCTION IN PART OR AS A WHOLE WITHOUT THE WRITTEN PERMISSION OF PRYMEFIX IS PROHIBITED.

1		UNLESS OTHERWISE SPECIFIED	DRAWN BY: RD	DATE 10/14/2013	
2		FRACTIONAL $\pm .003$ ANGULAR: ± 1.0 TWO PLACE DECIMAL $\pm .010$ THREE PLACE DECIMAL $\pm .003$ FOUR PLACE DECIMAL $\pm .0005$ (REAM)	TITLE: SA2-PRY-STD-001 M4 SMALL SLIDE ARM		
3					
4		HEAT TREAT N/A	No Pcs to Complete Order:		
5		MATERIAL 6061 Alloy			
6		FINISH BLACK ANODIZED			
7			SIZE B	DWG. NO. SA2-PRY-STD-001 PRINTS	REV 0
REVISION HISTORY		INCH UNITS	SCALE: 2:1	WEIGHT: 0.01	SHEET 2 OF 2

D
C
B
A

D
C
B
A

8 7 6 5 4 3 2 1