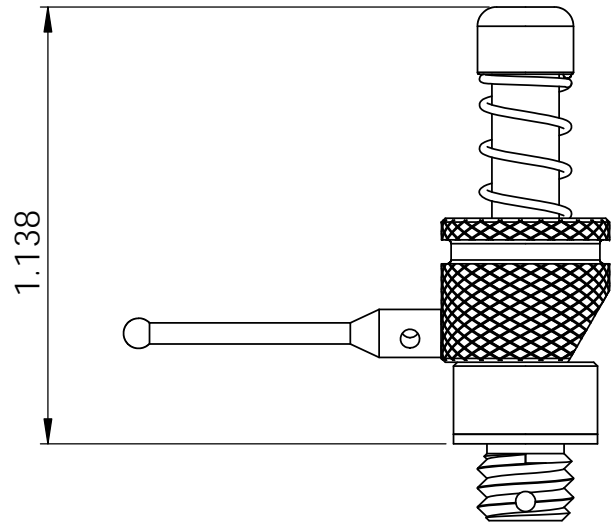
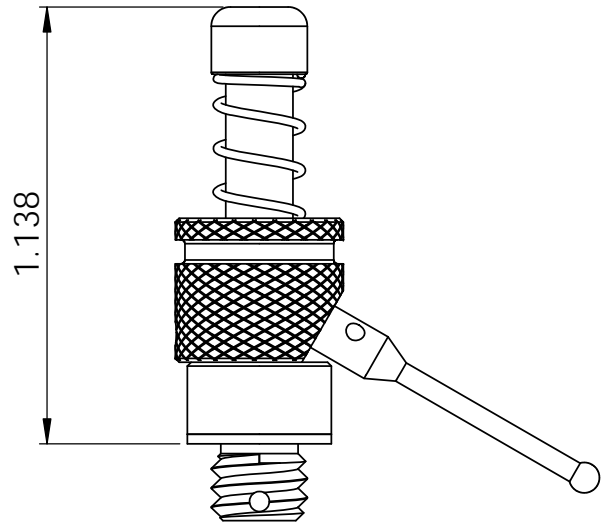


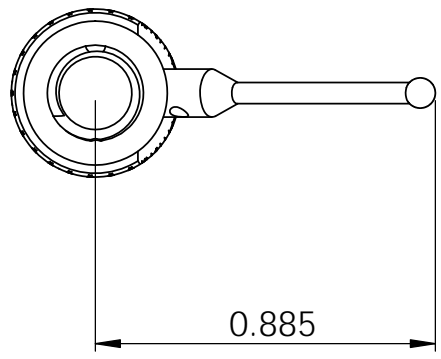
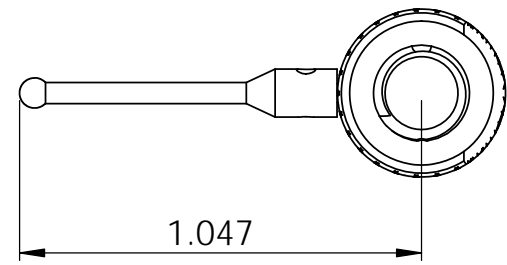
8	7	6	5	4	3	2	1
No. COMPONENTS IN ASSLY <b>1</b>	OP1	OP2	OP3	OP4	OP5	OP6	



CONFIGURATION 1



CONFIGURATION 2



SPRING FORCE AVAILABLE IN:  
 \*LIGHT FORCE\*  
 \*MEDIUM FORCE\*  
 \*EXTENDED FORCE\*



155 PRAIRIE LAKE RD, SUITE A  
 EAST DUNDEE, IL 60118  
 847.428.7122

FILE NAME TC2-PRY-STD-001 (LIGHT FORCE)
DIRECTORY P:\Manufacturing\PrymeFix Product Line\TC Touch Clamps\

**PROPRIETARY AND CONFIDENTIAL**

THE INFORMATION CONTAINED IN THIS DRAWING IS THE SOLE PROPERTY OF PRYMEFIX. ANY REPRODUCTION IN PART OR AS A WHOLE WITHOUT THE WRITTEN PERMISSION OF PRYMEFIX IS PROHIBITED.

1		UNLESS OTHERWISE SPECIFIED	DRAWN BY: <b>RD</b>	DATE 10/10/2013	
2			TITLE: TC2-PRY-STD-XXX TOUCH CLAMP		
3		HEAT TREAT <b>N/A</b>	No Pcs to Complete Order:		
4					
5					
6		MATERIAL <b>Material &lt;not specified&gt;</b>	SIZE <b>B</b>	DWG. NO. TC1-PRY-STD-XXX PRINTS	REV <b>0</b>
7		FINISH <b>N/A</b>	SCALE: 2:1	WEIGHT: 0.02	SHEET 7 OF 7
REVISION HISTORY			INCH UNITS		