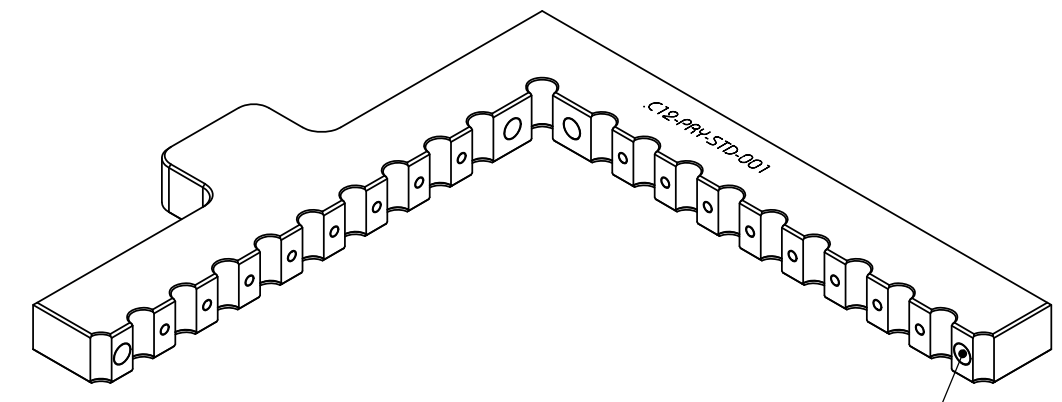
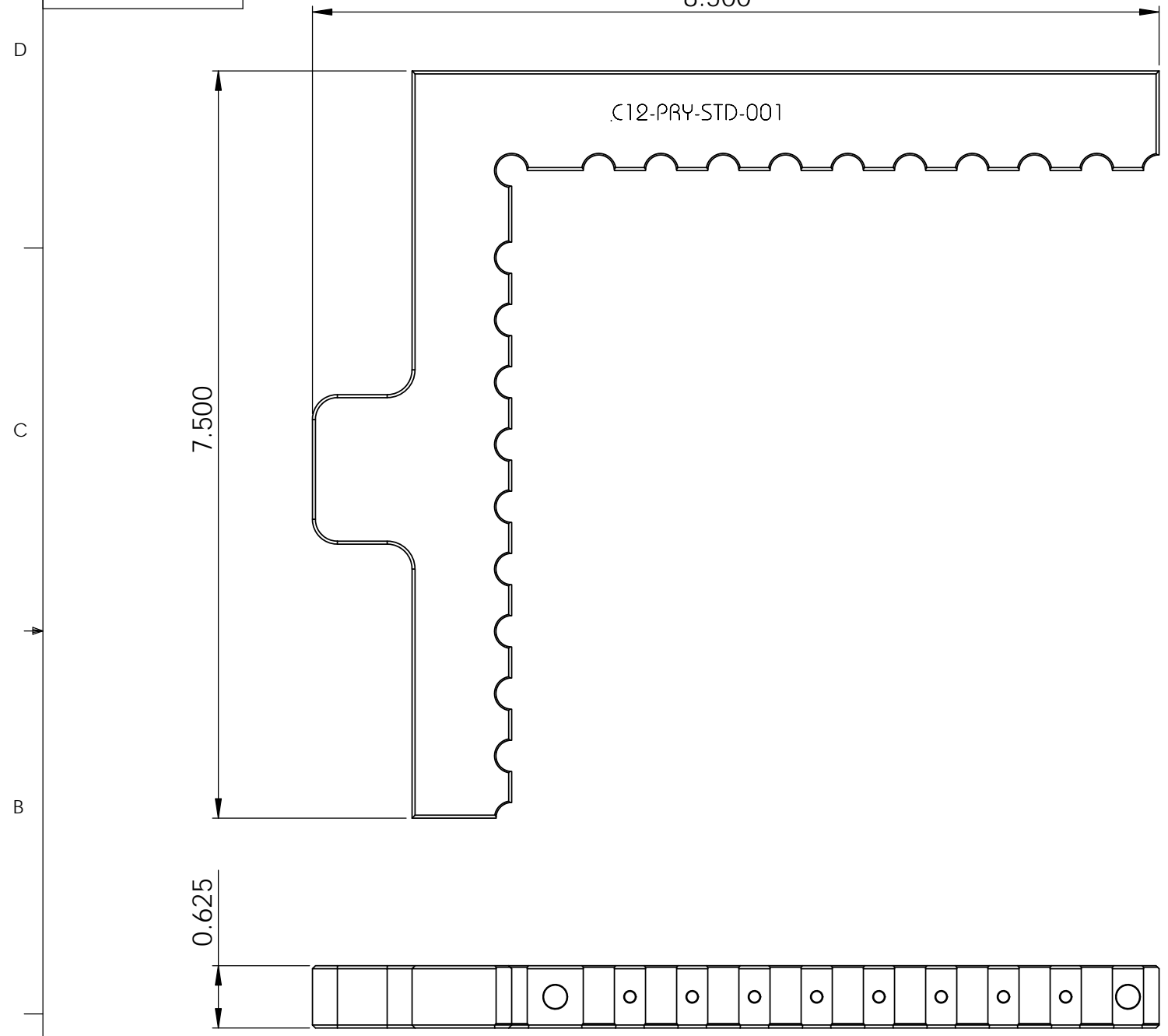


8	7	6	5	4	3	2	1
No. COMPONENTS IN ASSLY	OP1	OP2	OP3	OP4	OP5	OP6	



20x MAGNETS FOR MAGNETIC CONTACT WITH INSERT

PrymeFix
fixturing solutions

155 PRAIRIE LAKE RD, SUITE A
EAST DUNDEE, IL 60118
847.428.7122

FILE NAME C12-PRY-STD-001
DIRECTORY P:\Manufacturing\PrymeFix Product Line\C11 & N11 Corner Inserts & Nests\C12-PRY-STD-001\

PROPRIETARY AND CONFIDENTIAL

THE INFORMATION CONTAINED IN THIS DRAWING IS THE SOLE PROPERTY OF PRYMEFIX. ANY REPRODUCTION IN PART OR AS A WHOLE WITHOUT THE WRITTEN PERMISSION OF PRYMEFIX IS PROHIBITED.

1		UNLESS OTHERWISE SPECIFIED	DRAWN BY:	DATE 7/18/2013
2			TITLE: C12-PRY-STD-001	
3		FRACTIONAL $\pm .003$ ANGULAR: ± 1.0 TWO PLACE DECIMAL $\pm .010$ THREE PLACE DECIMAL $\pm .003$ FOUR PLACE DECIMAL $\pm .0005$ (REAM)	No Pcs to Complete Order:	
4				
5		HEAT TREAT	SIZE B DWG. NO. C12-PRY-STD-001 PRINTS REV	
6		MATERIAL Alloy Steel		
7		FINISH POWDER BLACK	SCALE: 1:2 WEIGHT: SHEET 3 OF 3	
REVISION HISTORY		INCH UNITS		