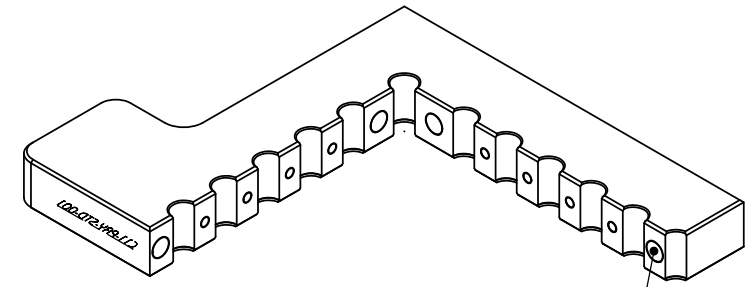
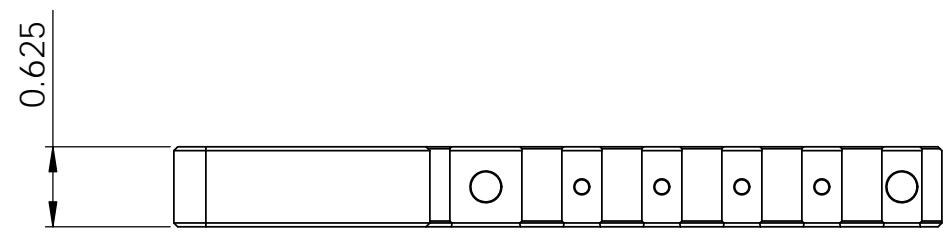
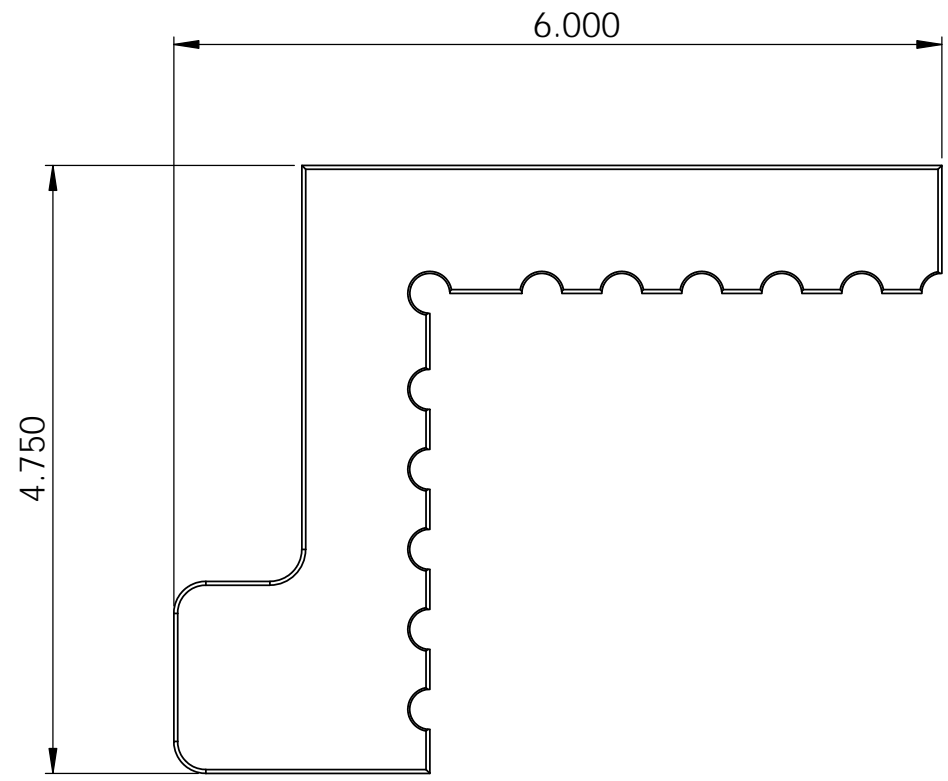


8	7	6	5	4	3	2	1
No. COMPONENTS IN ASSLY	OP1	OP2	OP3	OP4	OP5	OP6	



12x MAGNETS FOR MAGNETIC CONTACT WITH INSERT

PrymeFix
fixturing solutions

155 PRAIRIE LAKE RD, SUITE A
EAST DUNDEE, IL 60118
847.428.7122

FILE NAME C11-PRY-STD-001
DIRECTORY P:\Manufacturing\PrymeFix Product Line\C11 & N11 Corner Inserts & Nests\C11-PRY-STD-001\

PROPRIETARY AND CONFIDENTIAL

THE INFORMATION CONTAINED IN THIS DRAWING IS THE SOLE PROPERTY OF PRYMETECH. ANY REPRODUCTION IN PART OR AS A WHOLE WITHOUT THE WRITTEN PERMISSION OF PRYMETECH IS PROHIBITED.

1		UNLESS OTHERWISE SPECIFIED	DRAWN BY:	DATE 7/18/2013	
2			TITLE: C11-PRY-STD-001		
3		FRACTIONAL $\pm .003$ ANGULAR: ± 1.0 TWO PLACE DECIMAL $\pm .010$ THREE PLACE DECIMAL $\pm .003$ FOUR PLACE DECIMAL $\pm .0005$ (REAM)	No Pcs to Complete Order:		
4					
5	HEAT TREAT				
6	MATERIAL Alloy Steel		SIZE B	DWG. NO. C11-PYF-STD-001 PRINTS	REV
7	FINISH POWDER BLACK		SCALE: 1:2	WEIGHT:	SHEET 4 OF 4
REVISION HISTORY		INCH UNITS			